



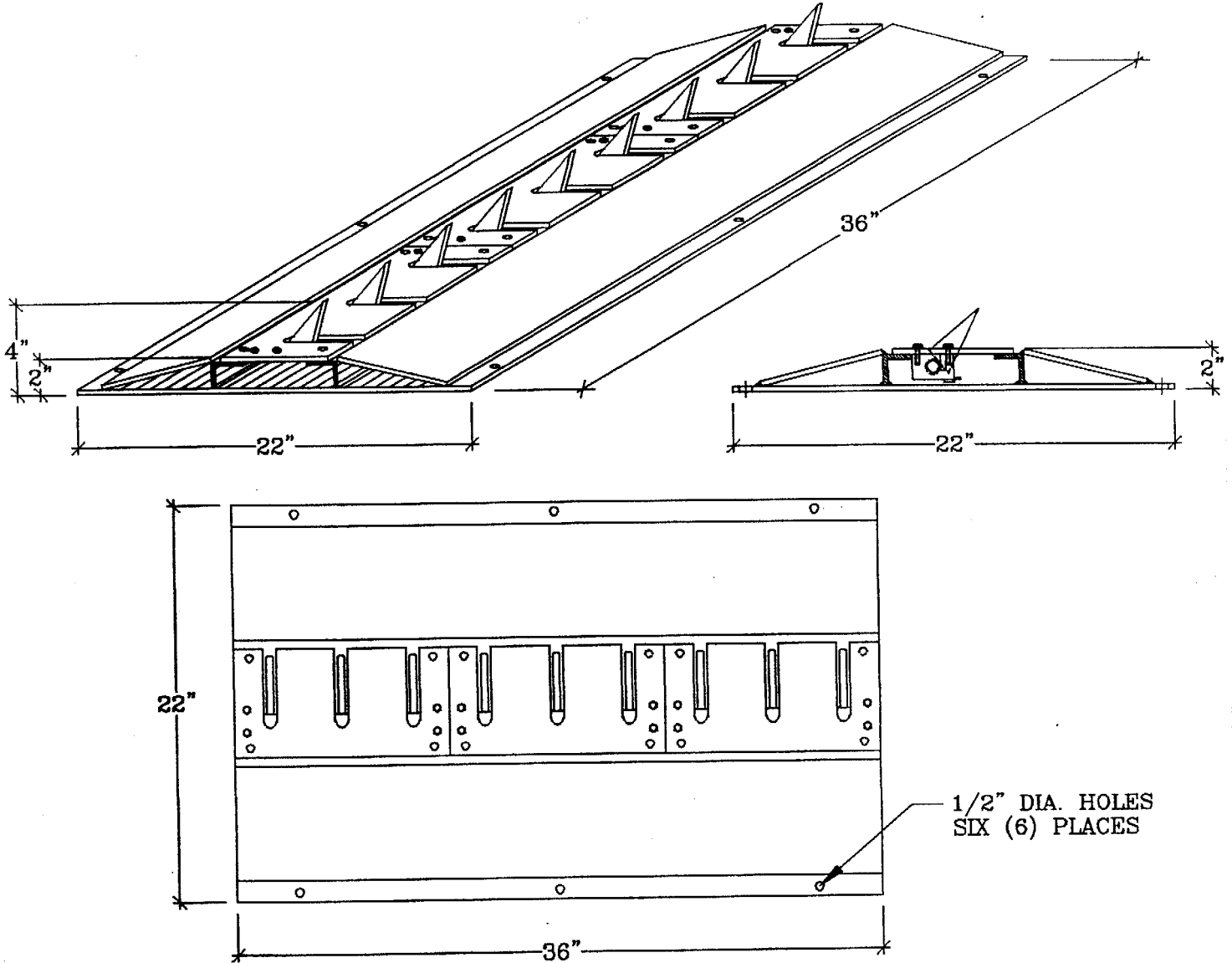
DURA BULL®

# CBP

## CREATIVE BUILDING PRODUCTS

DIVISION OF SPIRIT OF AMERICA CORPORATION

6409 Highview Drive • Fort Wayne, IN 46818-1385  
(260)432-7158 • FAX (260)459-0929 • (800)860-2855  
spirit@soacorp.com



### SURFACE MOUNTED INSTALLATION

COLOR: TRAFFIC SAFETY RED

- EASILY INSTALLED TO EXISTING ROADWAY.
- NO EXCAVATING OR ASPHALT CUTTING IS REQUIRED.
- LOW PROFILE FOR SMOOTH PASSAGE.
- FABRICATED IN 3 FT. SECTIONS TO CUSTOMIZE YOUR TRAFFIC LANE WIDTH.
- ALL WELDED CONSTRUCTION.
- 1/4" THICK HOT ROLLED STEEL FOR "LASTING DURABILITY".
- NOMINAL DIMENSIONS SHOWN.